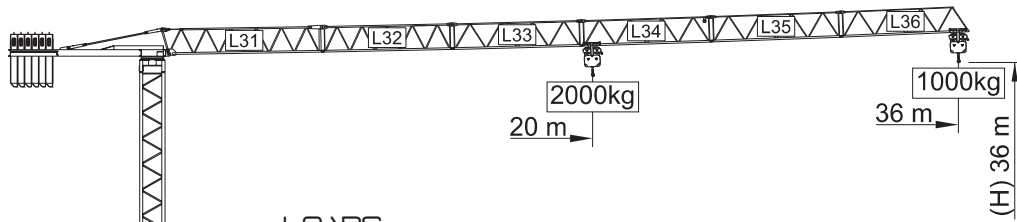
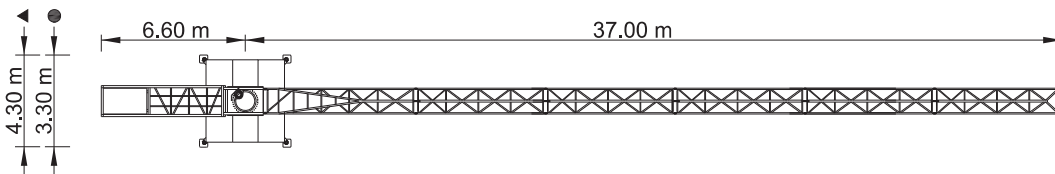
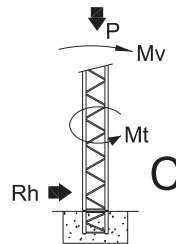
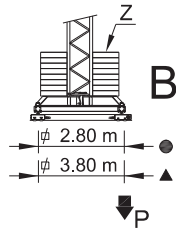
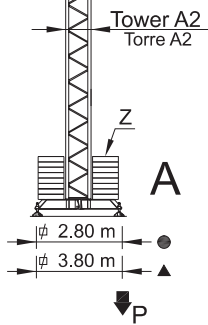


SGT 3610TL



LOADS CARGAS

Counterweight Contrapeso	Jib length Comprimento da lança	Kg / m		m	12	18	24	30	36
		2000	2000						
9000kg 6x1500kg	36 m L31+L37+L33+L34+L35+L36	20 m	2000	20	2000	2000	1600	1200	1000
7500kg 5x1500kg	30 m L31+L37+L33+L34+L36	20,6 m	2000	20	2000	2000	1700	1300	
6000kg 4x1500kg	24 m L31+L37+L33+L36	19,7 m	2000	20	2000	2000	1600		
4500kg 3x1500kg	18 m L31+L37+L36	18 m	2000	2000					
3000kg 2x1500kg	12 m L31+L36	12 m	2000	2000					



REACTIONS REAÇÕES

BALLAST TABLE AND MAXIMUM REACTIONS FOR ALL JIB VERSIONS
TABELA DE LASTRO E REAÇÕES MÁXIMAS PARA TODAS AS VERSÕES DE LANÇA

H m	A/B				C			
	Z kN	P kN	Mv kNm	P kN	Rh kN	Mt kNm		
18	400	250	312	219	566	172	17	26
21	400	250	313	221	569	178	20	26
24	400	250	314	222	571	184	23	26
27	400	250	315	224	574	190	25	26
30	400	300	316	238	577	196	28	26
33	480	350	338	264	580	202	31	26
36	600	400	417	286	711	208	34	26

CHARACTERISTICS CARACTERÍSTICAS

Motions Movimento	Speed Velocidade	Motor's power Pot. dos motores
Hoisting Elevação	0 a 58 m/min.	9 kW
Slewing Orientação	0 a 1 r.p.m.	3 daN.m
Trolleying Distribuição	0 a 50 m/min.	1,5 kW
Travelling* Translação	15 m/min.	2x2 kW
Electric power / Potência total		15 KVA
Tension / Tensão		400 v +- 5% (50 Hz)

* Option / Opção

PARTS
ELEMENTOS

		A (mm)	B (mm)	C (mm)	Peso (kg)	
Jib section Lana		7470	800	1650	1560	
L31						
Jib section Lana		6075	760	1220	385	
L32						
Jib section Lana		6055	760	1210	350	
L33						
Jib section Lana		6040	760	1200	275	
L34						
Jib section Lana		6030	760	1190	250	
L35						
Jib section Lana		5900	760	1400	240	
L36						
Tower section 12m Tramo torre 12m		11985	1180	1180	1950	
A2						
Tower section 6m Tramo torre 6m		6075	1180	1180	1030	
A2						
Tower section 3m Tramo torre 3m		3120	1180	1180	560	
A2						
Telescopic section Tramo telescopagem		3090	1385	1385	890	
A1						
Counter-jib Contra-lana		7380	1200	1530	2450	
Cross shaped base Chassis		2,8	4135	430	720	600
A2		3,8	5525	430	720	750
Cross shaped base Chassis		2,8	2025	250	720	350
		3,8	2720	250	720	400
Ballast Contra-peso		1160	320	2405	1500	
Foundation tower Tramo de encastrar		1170	1160	1160	250	
A2						

LOAD DIAGRAM
DIAGRAMA DE CARGAS



SPEED DIAGRAM
DIAGRAMA DE VELOCIDADE

