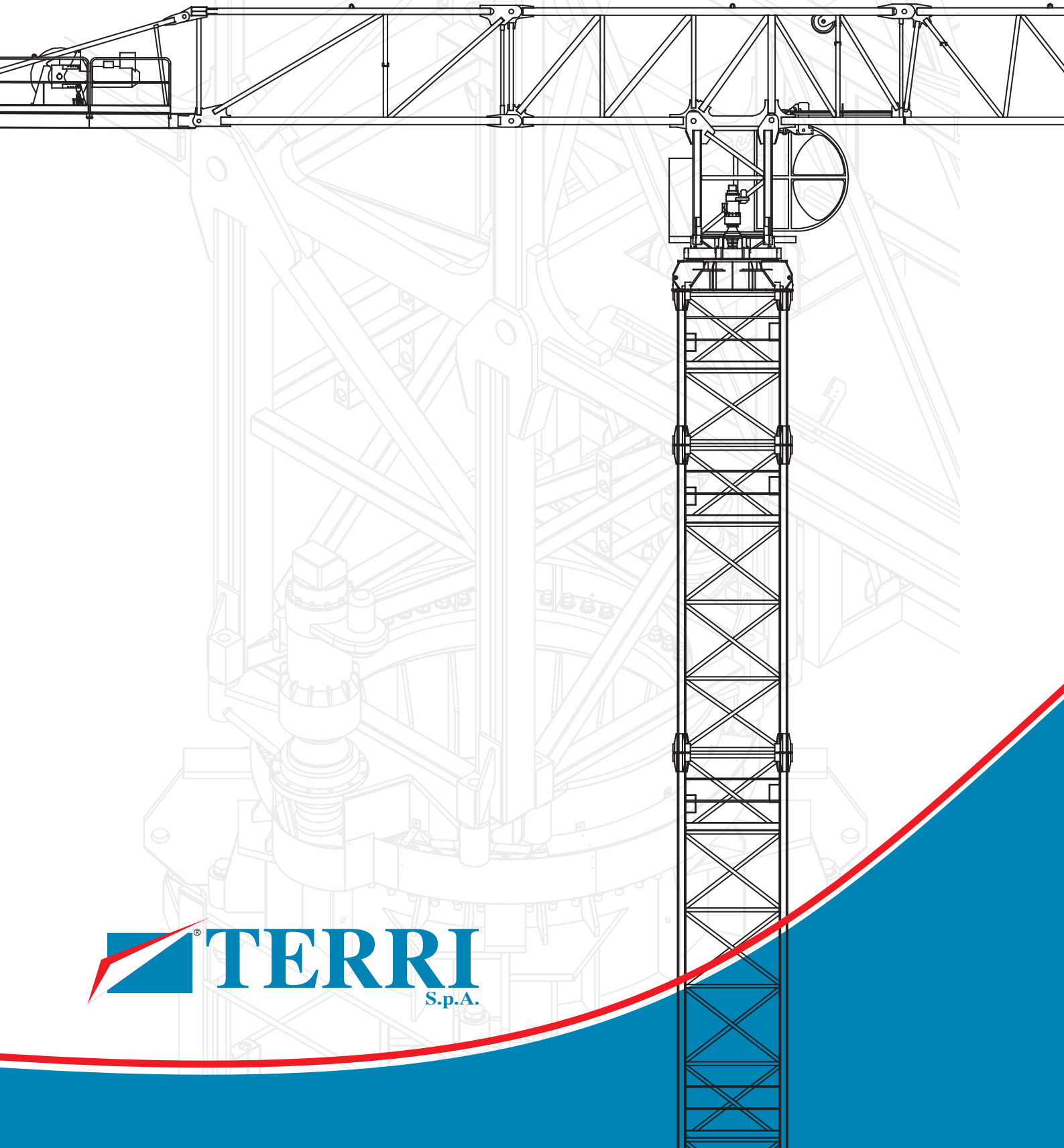


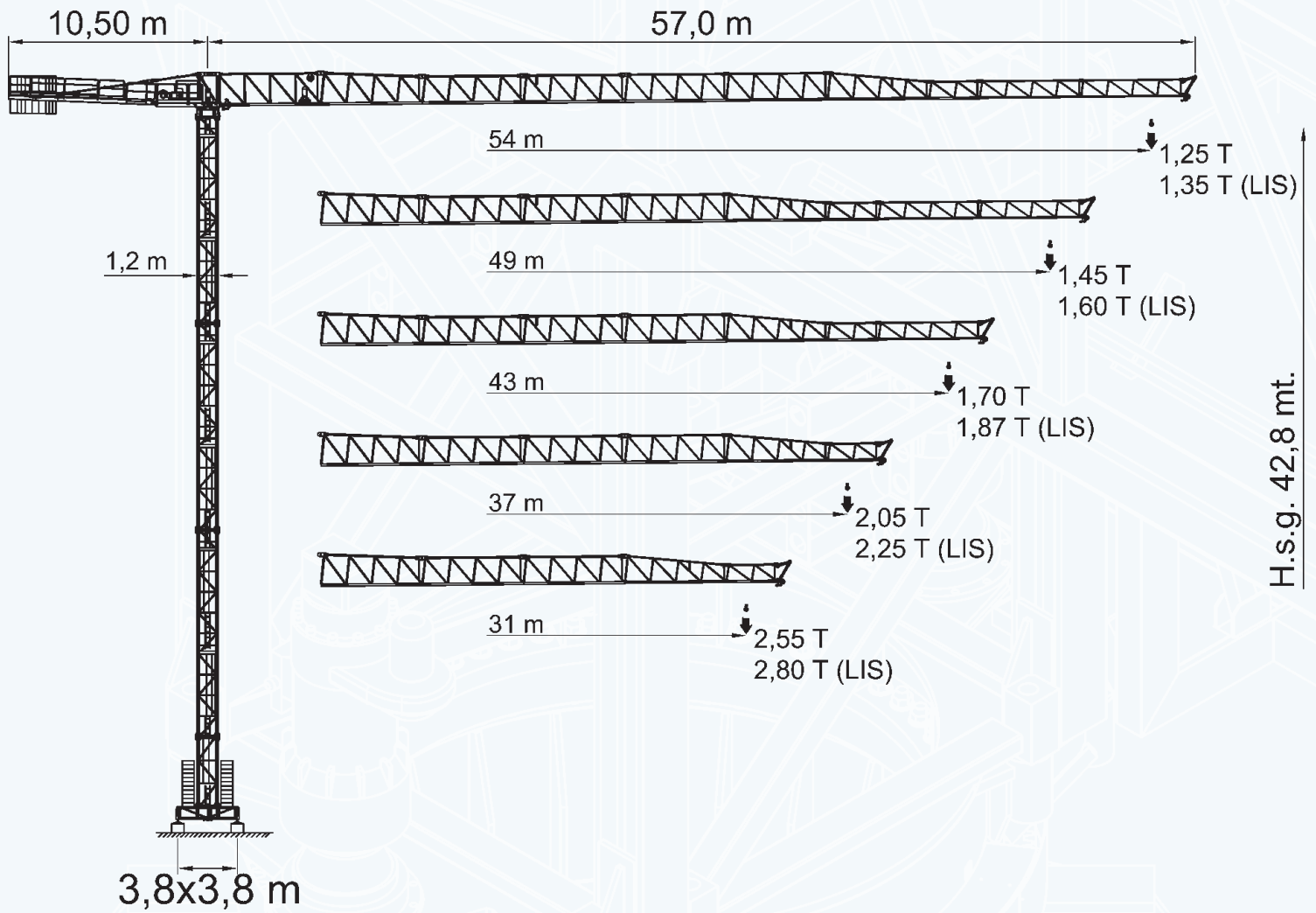
TMX 54-1350

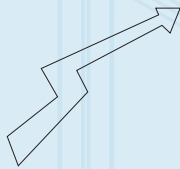


 **TERRI**
S.p.A.

SCHEMA TECNICA


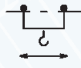

Technical Datasheet - Fiche Technique - Technische Spezifikationen

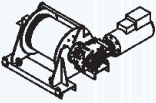






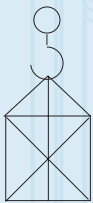
PRESTAZIONI

Performances - Performances - Aufführungen

		Velocità - Speed - Vitesse - Geschwindigkeit	Potenza - Power - Puissance - Leistung
Rotazione Slewing Orientation Schwenken		0,35 - 0,70 - 1,00 r.p.m.	2 x 4 Kw
Carrello Trolley Chariot Katzfahren		0 - 60 m/min	4 Kw
Traslazione Rail Translation Kranfahren		0 - 14 m/min	2 x 2,9 Kw

Tipo Type Type Type		Potenza - Power Puissance - Leistung		Fune - Rope Cable - Seil m	Marcia Step Vitesse Gang				
		CV - ch PS - hp	kW			Carico - Load Charge - Last	Velocità - Speed Geschw. - Vitesse	Carico - Load Charge - Last	Velocità - Speed Geschw. - Vitesse
						kg	m/min	kg	m/min
15-VF2,5	15	11	150	1	2500	7			
				2	2500	21			
				3	1250	40			
25-VF6	25	18,5	240	1	3000	8	6000	4	
				2	3000	32	6000	16	
				3	1500	64	3000	32	
				4	1000	76	2000	38	
30-VF6	30	22	300	1	3000	8	6000	4	
				2	3000	40	6000	20	
				3	2000	62	4000	31	
				4	1500	78	3000	39	
				5	1000	90	2000	45	

FORZA MOTRICE TOTALE TOTAL INSTALLED POWER PUISSANCE TOTALE GESAMTLEISTUNG	11 Kw (15 HP)	18,5 Kw (25 HP)	22 Kw (30 HP)
	24 Kw	31 Kw	35 Kw



RAGGI E PORTATE 2,5 T.



Radius and SWL - Portée et charge - Ausladung und tragfähigkeit

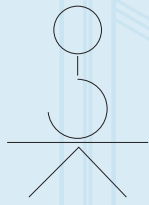
Portata max - Max s.w.l. Charge maxi - Max. Tragfähigkeit		2500 kg. 						
Braccio - Jib Ausleger - Flèche	m.	19	25	31	37	43	49	54
Campo di portata max da Max s.w.l. range from Charge maxi de Max. Tragfähigkeit von	a to à bis	19	25	31	31	31	31	30
Raggi (m.) Radius (m.) Portée (m.) Ausladung (m.)	12	2500	2500	2500	2500	2500	2500	2500
	13	2500	2500	2500	2500	2500	2500	2500
	14	2500	2500	2500	2500	2500	2500	2500
	16	2500	2500	2500	2500	2500	2500	2500
	18	2500	2500	2500	2500	2500	2500	2500
	19	2500	2500	2500	2500	2500	2500	2500
	20		2500	2500	2500	2500	2500	2500
	22		2500	2500	2500	2500	2500	2500
	24		2500	2500	2500	2500	2500	2500
	25		2500	2500	2500	2500	2500	2500
	26			2500	2500	2500	2500	2500
	28			2500	2500	2500	2500	2500
	30			2500	2500	2500	2500	2500
	31			2500	2500	2500	2500	2470
	32				2470	2450	2410	2380
	34				2310	2280	2250	2220
	36				2110	2100	2070	2040
	37				2050	2040	2010	1980
	38					1980	1950	1920
	40					1860	1830	1810
	42					1750	1730	1710
	43					1700	1680	1660
44						1640	1620	
46						1550	1530	
48						1470	1450	
49						1450	1430	
50							1380	
52							1310	
54							1250	

Con sistema "LIS" tutte le portate intermedie sono aumentate del 10% - All intermediate loads are increased of 10% if the crane is equipped with "LIS" control - Les charges intermédiaires sont augmentées de 10% si la grue est équipée avec contrôle "LIS"

RAGGI E PORTATE 3 e 6 T.

Radius and SWL - Portée et charge - Ausladung und tragfähigkeit

Portata max - Max s.w.l. Charge maxi - Max. Tragfähigkeit		3000 kg. 							6000 kg. 								
Braccio - Jib Ausleger - Flèche	m.	19	25	31	37	43	49	54	19	25	31	37	43	49	54		
Campo di portata max da Max s.w.l. range from Charge maxi de Max. Tragfähigkeit von	a to à bis	19	25	27	27	26,5	26	26	16	16	14,5	14	13,5	13	13		
Raggi (m.) Radius (m.) Portée (m.) Ausladung (m.)	12	3000	3000	3000	3000	3000	3000	3000	6000	6000	6000	6000	6000	6000	6000		
	13	3000	3000	3000	3000	3000	3000	3000	6000	6000	6000	6000	6000	6000	6000		
	14	3000	3000	3000	3000	3000	3000	3000	6000	6000	6000	6000	5880	5780	5680		
	16	3000	3000	3000	3000	3000	3000	3000	6000	6000	5320	5140	5070	4990	4900		
	18	3000	3000	3000	3000	3000	3000	3000	5440	5280	4670	4510	4450	4380	4300		
	19	3000	3000	3000	3000	3000	3000	3000	4950	4900	4280	4130	4070	4010	3930		
	20		3000	3000	3000	3000	3000	3000		4700	4160	4010	3960	3890	3830		
	22		3000	3000	3000	3000	3000	3000		4230	3740	3610	3560	3500	3440		
	24		3000	3000	3000	3000	3000	3000		3850	3400	3270	3230	3180	3120		
	25		3000	3000	3000	3000	3000	3000		3550	3170	3060	3020	2970	2910		
	26				3000	3000	3000	3000			3100	2990	2950	2900	2850		
	28				2910	2870	2840	2800	2770			2810	2770	2740	2700	2670	
	30				2700	2650	2630	2600	2560			2600	2550	2530	2500	2460	
	31				2550	2500	2490	2460	2430			2450	2400	2390	2360	2330	
	32					2470	2450	2410	2380				2370	2350	2310	2280	
	34					2310	2280	2250	2220				2210	2180	2150	2120	
	36					2110	2100	2070	2040				2010	2000	1970	1940	
	37					2050	2040	2010	1980				1950	1940	1910	1880	
	38						1980	1950	1920					1880	1850	1820	
	40							1860	1830	1810					1760	1730	1710
	42							1750	1730	1710					1650	1630	1610
	43							1700	1680	1660					1600	1580	1560
	44								1640	1620						1540	1520
46								1550	1530						1450	1430	
48								1470	1450						1370	1350	
49								1450	1430						1350	1330	
50									1380							1280	
52									1310							1210	
54									1250							1150	



ALTEZZA LIBERE

Height under hook - Hauteur sous crochet - Hakenhöhe

A	HSG (m)	Z (t)	F1 (kN)	A	HSG (m)	Z (t)	F1 (kN)
	42,8	80,55	595		52,7	104,20	905
	36,9	70,45	478		TC1215		
	31,0	60,35	410		TC1517		
	25,1	60,35	400				
	18,2	60,35	390				

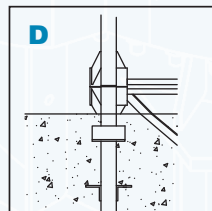
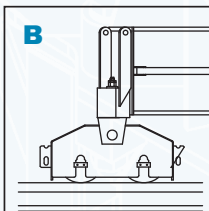
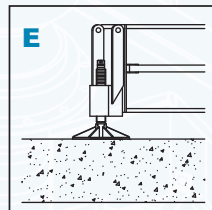
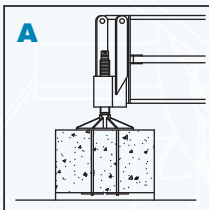
E	HSG (m)	Z (t)	F1 (kN)	E	HSG (m)	Z (t)	F1 (kN)
	42,2	70,70	546		52,1	88,50	905
	36,3	60,60	444				
	30,4	50,50	391		TC1517		
	24,5	50,50	381				
	18,6	50,50	371				

B	HSG (m)	Z (t)	F1 (kN)	B	HSG (m)	Z (t)	F1 (kN)
	42,4	70,70	560		52,3	88,5	870
	36,5	60,60	458				
	30,6	50,50	398		TC1517		
	24,7	50,50	388				
	18,8	50,50	378				

D	HSG (m)	F2 (kN)	F3 (kN)	D	HSG (m)	F2 (kN)	F3 (kN)
	41,5	948	759		51,4	1614	1424
	35,6	720	513				
	29,7	648	497		TC1517		
	23,8	583	441				
	17,9	530	397				

D	HSG (m)	F2 (kN)	F3 (kN)	D	HSG (m)	F2 (kN)	F3 (kN)
	63,2	1737	1422		80,9	3108	2763
	TC1721				TC2122		

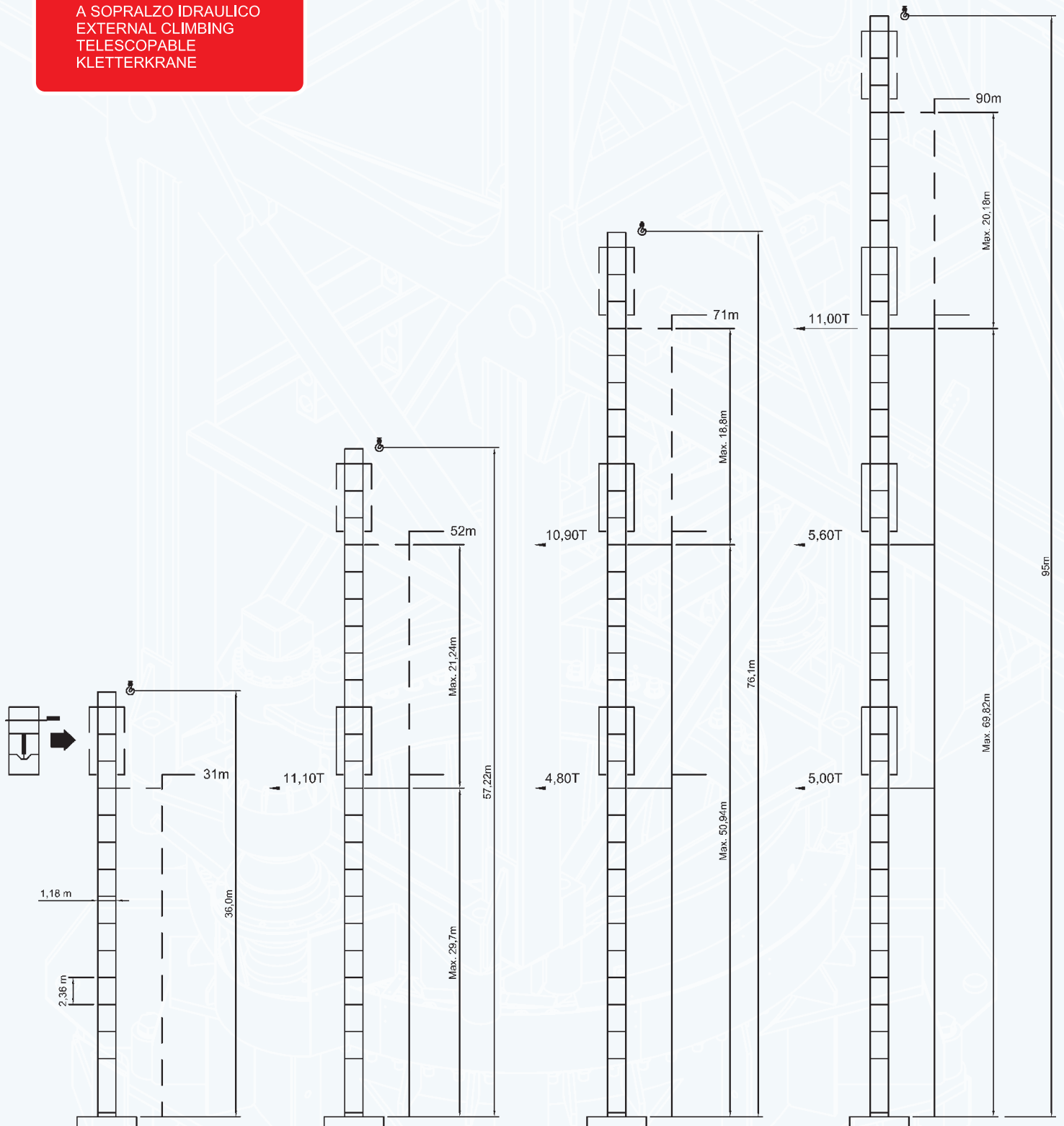
D	HSG (m)	F2 (kN)	F3 (kN)	D	HSG (m)	F2 (kN)	F3 (kN)
	63,2	1737	1422		80,9	3108	2763
	TC1721				TC2122		



ALTEZZA ANCORATE

Anchored Heights - Ankered Heights - Verankerte Heights

A SOPRALZO IDRAULICO
EXTERNAL CLIMBING
TELESCOPABLE
KLETTERKRANE



Dati illustrativi non impegnativi con riserva di modifica senza preavviso - Specifications and data not binding subject to modification without notice
Angaben und Beschreibungen unverbindlich andrerungen vorbehalten ohne weitere Mitteilung - Données techniques seulement indicatives modifications réservées sans préavis



Via Archimede 80
20041 Agrate Brianza - MI
Tel. 039 6833.333
Fax. 039 6833.357
mail: info@terri.it

www.terri.it

Scheda Tecnica
Technical Datasheet
Fiche Technique
Technische Spezifikationen



DISTRIBUTORE - DEALER - DISTRIBUTEUR - DISTRIBUTOR

Gru da città senza cuspidi - Top less city crane - City kran ohne turmspitze - City grue sans poinçon